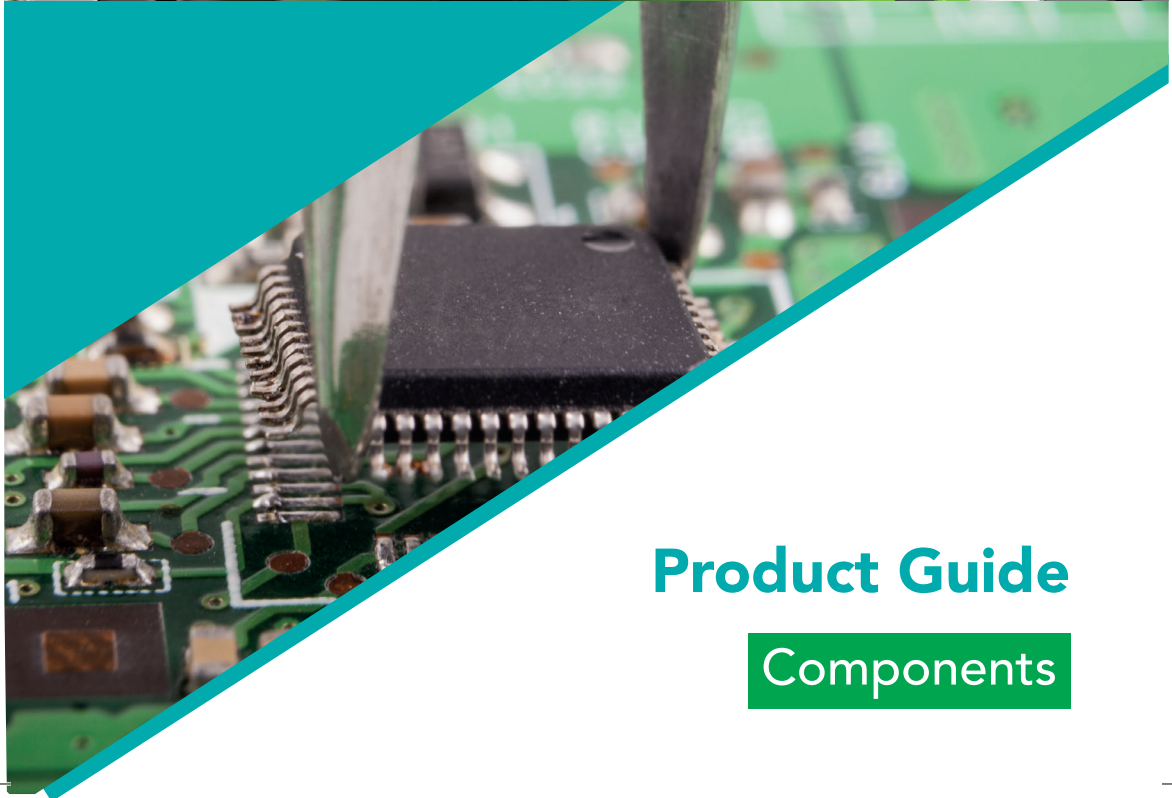


Fully compliant emergency
lighting solutions



Product Guide

Components



Z10 Safety Ltd is committed to bring fully BS EN 60598-2-22 compliant emergency lighting solutions to the market. At Z10 Safety we regularly talk to and discuss with lighting consultants, electrical contractors and end-users to fully understand markets requirements and develop cost effective emergency lighting solutions. Emphasizing on self-test emergency luminaires, the current Z10 Safety product portfolio offers multiple emergency lighting solutions suitable for a wide range of applications, including fully certified DALI-2 options. Moreover, with our expertise in battery management and based on an on-going long-term capacity aging test, Z10 Safety is proud to offer **5 year warranty**** on the luminaire and battery.

****Extended warranty available, contact Z10 Safety Ltd for more information**

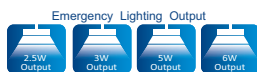
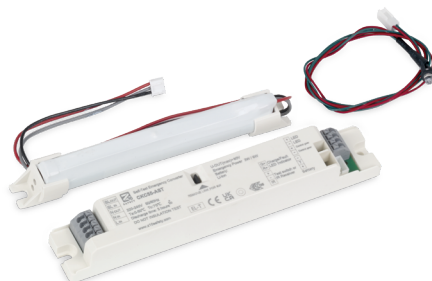
Contents

PRODUCT FAMILIES

Emergency Conversion Kits	2
Low voltage Micro Emergency Conversion Kits	4
Remote Emergency Kits	5
Mini Remote Emergency Packs	6
IP65 Remote Emergency Kits	7
Testing Facilities	8



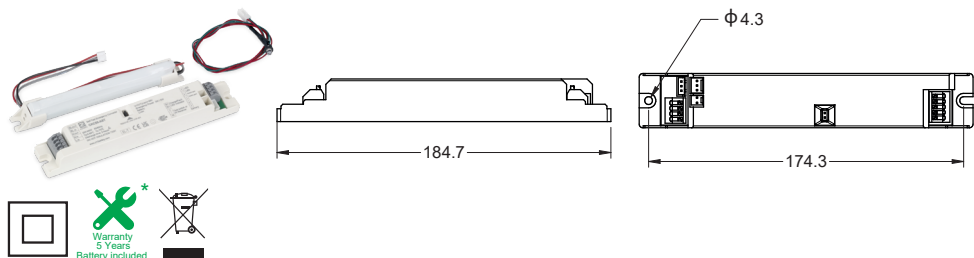
Emergency Conversion Kits



Key Features

- Complete kit for 3 and 1 hour emergency lighting
 - Different outputs available: 2.5W, 3W, 5W and 6W
 - Designed for wide range of LED loads (from 10V to 300V forward voltage)
 - Compatible with Li ion and LiFePO4 battery technologies
 - Up to 5 year warranty on the EM converter and battery*
 - Compliant with **BS EN 60598-2-22**
-
- Remote control available
 - Self-test function can be enabled with remote control ARC
 - Supplied with high intensity bi-colour LED indicator
 - Self-test and DALI-2 options
 - Small dimensions for easy integration (21.4 x 184.7)

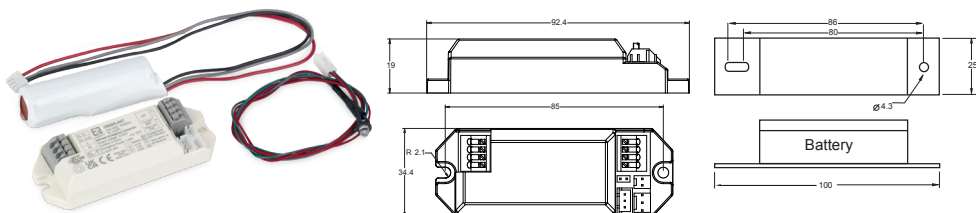
*Subject to Z10 Safety Ltd T&Cs



Part Number	EM output Constant power	LED forward voltage range	Battery type	Max. Output Voltage	Dimensions (HxWxL)	
CKC55-AST-3	3W	10-55V DC	Li ion 3.6V 5000mAh	60V DC	21.5x30x185mm	
CKC55-AST-6	6W	10-55V DC	Li ion 3.6V 10000mAh	60V DC	21.5x30x185mm	
CKC300-AST-3	3W	50-300V DC	Li ion 3.6V 5000mAh	310V DC	21.5x30x185mm	
CKC300-AST-6	6W	50-300V DC	Li ion 3.6V 10000mAh	310V DC	21.5x30x185mm	
CKC55-DL-3	3W	10-55V DC	Li ion 3.6V 5000mAh	60V DC	23.6x32.4x185mm	
CKC55-DL-6	6W	10-55V DC	Li ion 3.6V 10000mAh	60V DC	23.6x32.4x185mm	
CKC300-DL-3	3W	50-300V DC	Li ion 3.6V 5000mAh	310V DC	23.6x32.4x185mm	
CKC300-DL-6	6W	50-300V DC	Li ion 3.6V 10000mAh	310V DC	23.6x32.4x185mm	
CKC55-AST-LP4-2.5	2.5W	10-55V DC	LiFePO4 3.2V 4000mAh	60V DC	21.5x30x185mm	
CKC55-AST-LP4-5	5W	10-55V DC	LiFePO4 3.2V 8000mAh	60V DC	21.5x30x185mm	
CKC300-AST-LP4-2.5	2.5W	50-300V DC	LiFePO4 3.2V 4000mAh	310V DC	21.5x30x185mm	
CKC300-AST-LP4-5	5W	50-300V DC	LiFePO4 3.2V 8000mAh	310V DC	21.5x30x185mm	
CKC55-DL-LP4-2.5	2.5W	10-55V DC	LiFePO4 3.2V 4000mAh	60V DC	23.6x32.4x185mm	
CKC55-DL-LP4-5	5W	10-55V DC	LiFePO4 3.2V 8000mAh	60V DC	23.6x32.4x185mm	
Rated supply voltage		220-240 V AC		Battery charging time		< 16 hours
Mains frequency				Max. Ambient temp.		0-50 °C
Standby power				Max. battery temp.		0-75 °C
Emergency rated duration				Safety class		II

Note: All EM conversion kits are supplied as complete kit including the battery. Warranty is subject to Z10 Safety Ltd T&Cs.

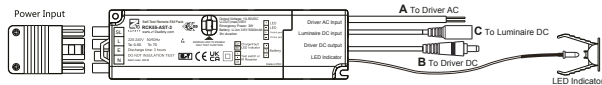
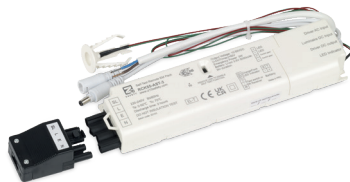
Low voltage Micro Emergency Conversion Kits



	CKD55-AST-2	CKD20-AST-1.5
Rated supply voltage	220-240 Vac	
Mains frequency	50 / 60 Hz	
Max power consumption	5W	
Standby power	< 0.8W	
Emergency output power	1.8W constant power	1.5W constant power
LED forward voltage range	10-50V DC	2.5-20 V DC
Max.output voltage	30 Vdc	
Emergency rated duration	3 hours	
Battery charging time	< 16 hours	
Max. Ambient temp.	45 °C	
Max. battery temp.	75 °C	
Safety class	II	
Module Dimensions (HxWxL)	19 x 34.4 x 92.4 mm	
Battery Pack Dimensions (HxWxL)	21.9 x 25 x 100mm	
Battery Types	18650 * Li-ion 1.5W 3 hours	

Note: All EM conversion kits are supplied as complete kit including the battery. Warranty is subject to Z10 Safety Ltd T&Cs.

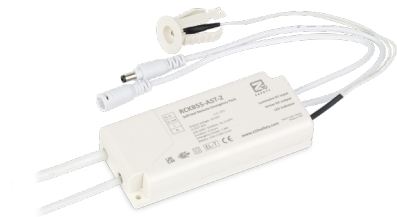
Remote Emergency Packs



	RCK55-AST-3	RCK55-AST-6	RCK300-AST-3	RCK300-AST-6
Rated supply voltage	220-240 V AC			
Mains frequency	50 / 60 Hz			
Max power consumption	5W (only during charging mode)			
Standby power	< 0.8W			
Emergency output power	3W Constant Power	6W Constant Power	3W Constant Power	6W Constant Power
LED forward voltage range	10-55 V DC		50-300V DC	
Max.output voltage	55 V DC		300V DC	
Emergency rated duration	3 hours			
Battery charging time	Up to 8 hours (first charge up to 16 hours)	Up to 16 hours (first charge up to 24 hours)	Up to 8 hours (first charge up to 16 hours)	Up to 16 hours (first charge up to 24 hours)
Max. Ambient temp.	45 °C			
Max. battery temp.	60 °C			
Safety class	II			
Dimensions (HxWxL)	25.6x55x223 mm	25.6x75.8x223mm	25.6x55x223 mm	25.6x75.8x223mm
Battery types	18650 Li-ion 3.6V 5000 mAh	18650 Li-ion 3.6V 10000 mAh	18650 Li-ion 3.6V 5000 mAh	18650 Li-ion 3.6V 10000 mAh

* Subject to Z10 Safety Ltd T&Cs.

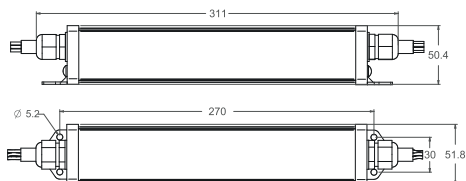
Mini Remote Emergency Packs



	RCKB55-AST-2
Rated supply voltage	220-240V AC
Mains frequency	50/60 Hz
Max power consumption	3W
Standby power	< 0.8W
Emergency output power	1.8W constant power
LED forward voltage range	10-55 Vdc
Max.output voltage	55 Vdc
Emergency rated duration	3 hours
Battery charging time	< 16 hours
Max. Ambient temp.	45°C
Max. battery temp.	60°C
Safety class	II
Dimensions (HxWxL)	23 x 59 x 135 mm
Battery Life/Output power (3hr emergency lighting)	18650 * Li-ion 3.6V 2500mAh

* Subject to Z10 Safety Ltd T&Cs.

IP65 Remote Emergency Kits



	RCK55-AST-6/IP65	RCK300-AST-6/IP65
Rated supply voltage	220-240 V AC	
Mains frequency	50 / 60 Hz	
Max power consumption	5W	
Standby power	< 0.8W	
Emergency output power	6W Constant Power	
LED forward voltage range	10-55 Vdc	50-300 Vdc
Max.output voltage	60 Vdc	300 Vdc
Battery charging time	< 16 hours	
Max. Ambient temp.	45 °C	
Max. battery temp.	60 °C	
Safety class	I	
Dimensions (HxWxL)	50.4 x 51.8 x 311 mm	
Battery Life/Output power (3hr emergency lighting)	18650* Li-ion 10000 mAh	

* Subject to Z10 Safety Ltd T&Cs.

Testing Facilities

MT (Manual Test)

This luminaire needs to be tested by a competent person according to BS EN 50172:2004. This luminaire can be used in conjunction with the Advanced Remote Control (ARC). ARC is an optional tool that adds new features to AST and MT emergency luminaires. If functional test or full duration test is initiated via ARC the MT luminaire will automatically switch to mains mode after the functional or full duration test is completed. This luminaire has an integrated test button for quick functional test.

Note that MT emergency luminaires work independently from the remote control. ARC remote control is an optional tool.



MT (Manual Test)

MT emergency luminaires must be tested by accredited engineer. Optional ARC remote control adds extra functions.

AST (Advanced Self-Test)

This is a self-test luminaire. Functional test is carried out automatically once a week and runs for 30seconds. Full duration test is carried out automatically every 52 weeks. First full duration test is carried out automatically within the first 4 weeks after the luminaire being connected to mains voltage. This luminaire can be used in conjunction with the Advanced Remote Control (ARC). ARC is an optional tool that adds extra features to AST emergency luminaires. Please refer to the ARC user guide.

Note that AST emergency luminaires work independently from the remote control. ARC remote control is an optional tool.



AST (Advanced Self-Test)

AST emergency luminaires are self-test units. ARC remote control adds with the possibility to add extra functions with ARC remote control.

Remote Controls



Advanced Remote Control (ARC)

ARC is a multifunction remote control suitable only for MT and AST luminaires.

Our ARC remote control provides the person responsible for the emergency lighting with the means to check battery life and the self-testing status; and carry out functional and full duration tests without needing the use of key switch or a ladder or a cherry picker – a key health and safety issue.

Please contact us for further information or refer to ARC user guide.

Note that MT and AST emergency luminaires work independently from the remote control. ARC remote control is an optional tool.



DALI-2 (Digital Addressable Lighting Interface)

This version is suitable to operate under a DALI-2 system which allows two-way communication between devices in order to report luminaire health status.



Disclaimer

*Z10 Safety Ltd reserves the right to modify or amend technical information contained within this brochure without notice.
Whilst care has been taken in the production of this brochure, Z10 Safety Ltd cannot be held responsible for any error or omission.
Z10 Safety reserves all rights in the contents of this brochure. It is forbidden the reproduction, disclosure to third parties or utilization of
its content without prior written consent of Z10 Safety Ltd.*

Z10 SAFETY

Suite 501 The Nexus Building, Broadway, Letchworth Garden City, Hertfordshire. SG6 9BL
T 0208 00 48 551 E enquire@z10safety.com W www.z10safety.com